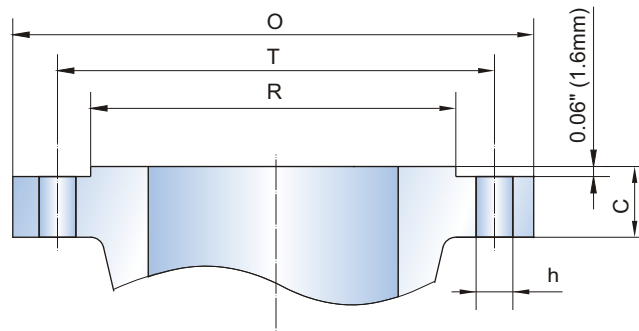




Steel End Flange Dimensions

Class 150-300

CLASS 150 300 RF



CLASS	SIZE		O		R		C		T		h		Bolt	
	in	mm	in	mm	in	mm	in	mm	in	mm	in	mm	QTY.	Diameter
150	2	50	6.00	152	3.62	92	0.62	16	4.75	120.5	0.75	19	4	5/8
	2 1/2	65	7.00	178	4.12	105	0.69	18	5.50	139.5	0.75	19	4	5/8
	3	80	7.50	190	5.00	127	0.75	19	6.00	152.5	0.75	19	4	5/8
	4	100	9.00	229	6.19	157	0.94	24	7.50	190.5	0.75	19	8	5/8
	6	150	11.00	279	8.50	216	1.00	26	9.50	241.5	0.88	22	8	3/4
	8	200	13.50	343	10.62	270	1.12	29	11.75	298.5	0.88	22	8	3/4
	10	250	16.00	406	12.75	324	1.19	31	14.25	362	1.00	25	12	7/8
	12	300	19.00	483	15.00	381	1.25	32	17.00	432	1.00	25	12	7/8
	14	350	21.00	533	16.25	413	1.38	35	18.75	476	1.12	29	12	1
	16	400	23.50	597	18.50	470	1.44	37	21.25	540	1.12	29	16	1
	18	450	25.00	635	21.00	533	1.56	40	22.75	578	1.25	32	16	1 1/8
	20	500	27.50	699	23.00	584	1.69	43	25.00	635	1.25	32	20	1 1/8
	24	600	32.00	813	27.25	692	1.88	48	29.50	749.5	1.38	35	20	1 1/4
	26	650	34.25	870	29.50	749	2.69	69	31.75	806.5	1.38	35	24	1 1/4
	28	700	36.50	927	31.50	800	2.81	72	34.00	863.5	1.38	35	28	1 1/4
	30	750	38.75	984	33.75	857	2.94	75	36.00	914.5	1.38	35	28	1 1/4
	32	800	41.75	1060	36.00	914	3.19	81	38.50	978	1.62	41	28	1 1/2
	36	900	46.00	1168	40.25	1022	3.56	91	42.75	1086	1.62	41	32	1 1/2
40	1000	50.75	1289	44.25	1124	3.56	91	47.25	1200	1.62	41	36	1 1/2	
42	1050	53.00	1346	47.00	1194	3.81	97	49.50	1257.5	1.62	41	36	1 1/2	
48	1200	59.50	1511	53.50	1359	4.25	108	56.00	1422.5	1.62	41	44	1 1/2	
300	2	50	6.50	165	3.62	92	0.88	23	5.00	127	0.75	19	8	5/8
	2 1/2	65	7.50	190	4.12	105	1.00	26	5.88	149	0.88	22	8	3/4
	3	80	8.25	210	5.00	127	1.12	29	6.62	168.5	0.88	22	8	3/4
	4	100	10.00	254	6.19	157	1.25	32	7.88	200	0.88	22	8	3/4
	6	150	12.50	318	8.50	216	1.44	37	10.62	270	0.88	22	12	3/4
	8	200	15.00	381	10.62	270	1.62	42	13.00	330	1.00	25	12	7/8
	10	250	17.50	445	12.75	324	1.88	48	15.25	387.5	1.12	29	16	1
	12	300	20.50	521	15.00	381	2.00	51	17.75	451	1.25	32	16	1 1/8
	14	350	23.00	584	16.25	413	2.12	54	20.25	514.5	1.25	32	20	1 1/8
	16	400	25.50	648	18.50	470	2.25	58	22.50	571.5	1.38	35	20	1 1/4
	18	450	28.00	711	21.00	533	2.38	61	24.75	628.5	1.38	35	24	1 1/4
	20	500	30.50	775	23.00	584	2.50	64	27.00	686	1.38	35	24	1 1/4
	24	600	36.00	914	27.25	692	2.75	70	32.00	813	1.62	41	24	1 1/2
	26	650	38.25	972	29.50	749	3.12	80	34.50	876.5	1.75	45	28	1 5/8
	28	700	40.75	1035	31.50	800	3.38	86	37.00	940	1.75	45	28	1 5/8
	30	750	43.00	1092	33.75	857	3.62	92	39.25	997	1.88	48	28	1 3/4
	32	800	45.25	1149	36.00	914	3.88	98	41.50	1054	2.00	51	28	1 7/8
	36	900	50.00	1270	40.25	1022	4.12	105	46.00	1168.5	2.12	54	32	2

End Flange Dimensions:

Size 2"-24" to ASME B16.5, Size 26"-48" to ASME B16.47 A.

Tolerances: Unit inch

Thickness C:

NPS ≤ 18" +0.12, -0
NPS ≥ 20" +0.19, -0

Drilling and Facing:

Bolt Circle Diameter h: ± 0.06

Center to Center of Adjacent Bolt Holes: ± 0.03

Eccentricity Between Bolt Circle Diameter and Machined Facing Diameters:

NPS ≤ 2 1/2" ± 0.03

NPS ≥ 3" ± 0.06

Outside Diameter R:

0.06 Raised Face: NPS 2"-24" ± 0.03

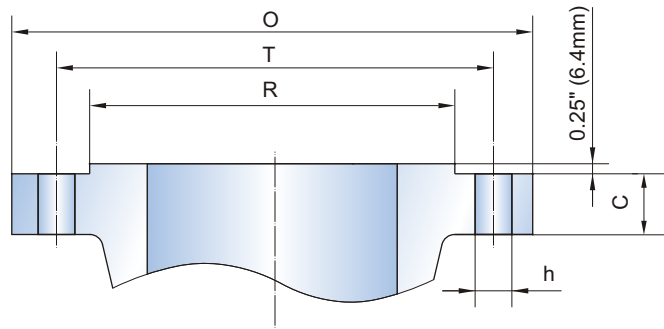
NPS ≥ 26" ± 0.08

0.25 Raised Face: NPS 2"-24" ± 0.02

NPS ≥ 26" ± 0.04



CLASS 600-2500 RF



CLASS	SIZE		O		R		C		T		h		Bolt	
	in	mm	in	mm	in	mm	in	mm	in	mm	in	mm	QTY.	Diameter
600	2	50	6.50	165	3.62	92	1.00	26	5.00	127	0.75	19	8	5/8
	2 1/2	65	7.50	190	4.12	105	1.12	29	5.88	149	0.88	22	8	3/4
	3	80	8.25	210	5.00	127	1.25	32	6.62	168	0.88	22	8	3/4
	4	100	10.75	273	6.19	157	1.50	38	8.50	216	1.00	25	8	7/8
	6	150	14.00	356	8.50	216	1.88	48	11.50	292	1.12	29	12	1
	8	200	16.50	419	10.62	270	2.19	56	13.75	349	1.25	32	12	1 1/8
	10	250	20.00	508	12.75	324	2.50	64	17.00	432	1.38	35	16	1 1/4
	12	300	22.00	559	15.00	381	2.62	67	19.25	489	1.38	35	20	1 1/4
	14	350	23.75	603	16.25	413	2.75	70	20.75	527	1.50	38	20	1 3/8
	16	400	27.00	686	18.50	470	3.00	77	23.75	603	1.62	41	20	1 1/2
	18	450	29.25	743	21.00	533	3.25	83	25.75	654	1.75	44	20	1 5/8
20	500	32.00	813	23.00	584	3.50	89	28.50	724	1.75	44	24	1 5/8	
24	600	37.00	940	27.25	692	4.00	102	33.00	838	2.00	51	24	1 7/8	
900	2	50	8.50	216	3.62	92	1.50	38.5	6.50	165.1	1.00	26	8	7/8
	2 1/2	65	9.62	244	4.12	105	1.62	41.5	7.50	190.5	1.12	29	8	1
	3	80	9.50	241	5.00	127	1.50	38.5	7.50	190.5	1.00	26	8	7/8
	4	100	11.50	292	6.19	157	1.75	44.5	9.25	234.9	1.25	32	8	1 1/8
	6	150	15.00	381	8.50	216	2.19	56.0	12.50	317.5	1.25	32	12	1 1/8
	8	200	18.50	470	10.62	270	2.50	63.5	15.50	393.7	1.50	39	12	1 3/8
	10	250	21.50	545	12.75	324	2.75	70.0	18.50	469.9	1.50	39	16	1 3/8
	12	300	24.00	610	15.00	381	3.12	79.5	21.00	533.4	1.50	39	20	1 3/8
	14	350	25.25	640	16.25	413	3.38	86.0	22.00	558.8	1.62	42	20	1 1/2
	16	400	27.75	705	18.50	470	3.50	89.0	24.25	615.9	1.75	45	20	1 5/8
	18	450	31.00	785	21.00	533	4.00	102.0	27.00	685.8	2.00	51	20	1 7/8
20	500	33.75	855	23.00	584	4.25	108.0	29.50	749.3	2.12	54	20	2	
24	600	41.00	1040	27.25	692	5.50	140.0	35.50	901.7	2.62	67	20	2 1/2	
1500	2	50	8.50	216	3.62	92	1.50	38.5	6.50	165.1	1.00	26	8	1
	2 1/2	65	9.62	244	4.12	105	1.62	41.5	7.50	190.5	1.12	29	8	1 1/8
	3	80	10.50	267	5.00	127	1.88	48.0	8.00	203.2	1.25	32	8	1 1/4
	4	100	12.25	311	6.19	157	2.12	54.0	9.50	241.3	1.38	35	8	1 3/8
	6	150	15.50	394	8.50	216	3.25	83.0	12.50	317.5	1.50	39	12	1 1/2
	8	200	19.00	483	10.62	270	3.62	92.9	15.50	393.7	1.75	45	12	1 3/4
	10	250	23.00	585	12.75	324	4.25	108.0	19.00	482.6	2.00	51	12	2
	12	300	26.50	675	15.00	381	4.88	124.0	22.50	571.5	2.12	54	16	2 1/8
	14	350	29.50	750	16.25	413	5.25	133.5	25.00	635.0	2.38	61	16	2 3/8
	16	400	32.50	825	18.50	470	5.75	146.5	27.75	704.8	2.62	67	16	2 5/8
	18	450	36.00	915	21.00	533	6.38	162.0	30.50	774.7	2.88	74	16	2 7/8
20	500	38.75	985	23.00	584	7.00	178.0	32.75	831.8	3.12	80	16	3 1/8	
24	600	46.00	1170	27.25	692	8.00	203.5	39.00	990.6	3.62	93	16	3 5/8	
2500	2	50	9.25	235	3.62	92	2.00	51.0	6.75	171.4	1.12	29	8	1
	2 1/2	65	10.50	267	4.12	105	2.25	57.5	7.75	196.8	1.25	32	8	1 1/8
	3	80	12.00	305	5.00	127	2.62	67.0	9.00	228.6	1.38	35	8	1 1/4
	4	100	14.00	356	6.19	157	3.00	76.5	10.75	273.0	1.62	42	8	1 1/2
	6	150	19.00	483	8.50	216	4.25	108.0	14.50	368.3	2.12	54	8	2
	8	200	21.75	550	10.62	270	5.00	127.0	17.25	438.1	2.12	54	12	2
	10	250	26.50	675	12.75	324	6.50	165.5	21.25	539.7	2.62	67	12	2 1/2
12	300	30.00	760	15.00	381	7.25	184.5	24.38	619.1	2.88	74	12	2 3/4	

End Flange Dimensions: ASME B16.5
Tolerances: the Same as Class 150 300